



PARTS MANUAL

JCPT0507DC / 0607DC
SELF-PROPELLED SCISSOR LIFTS



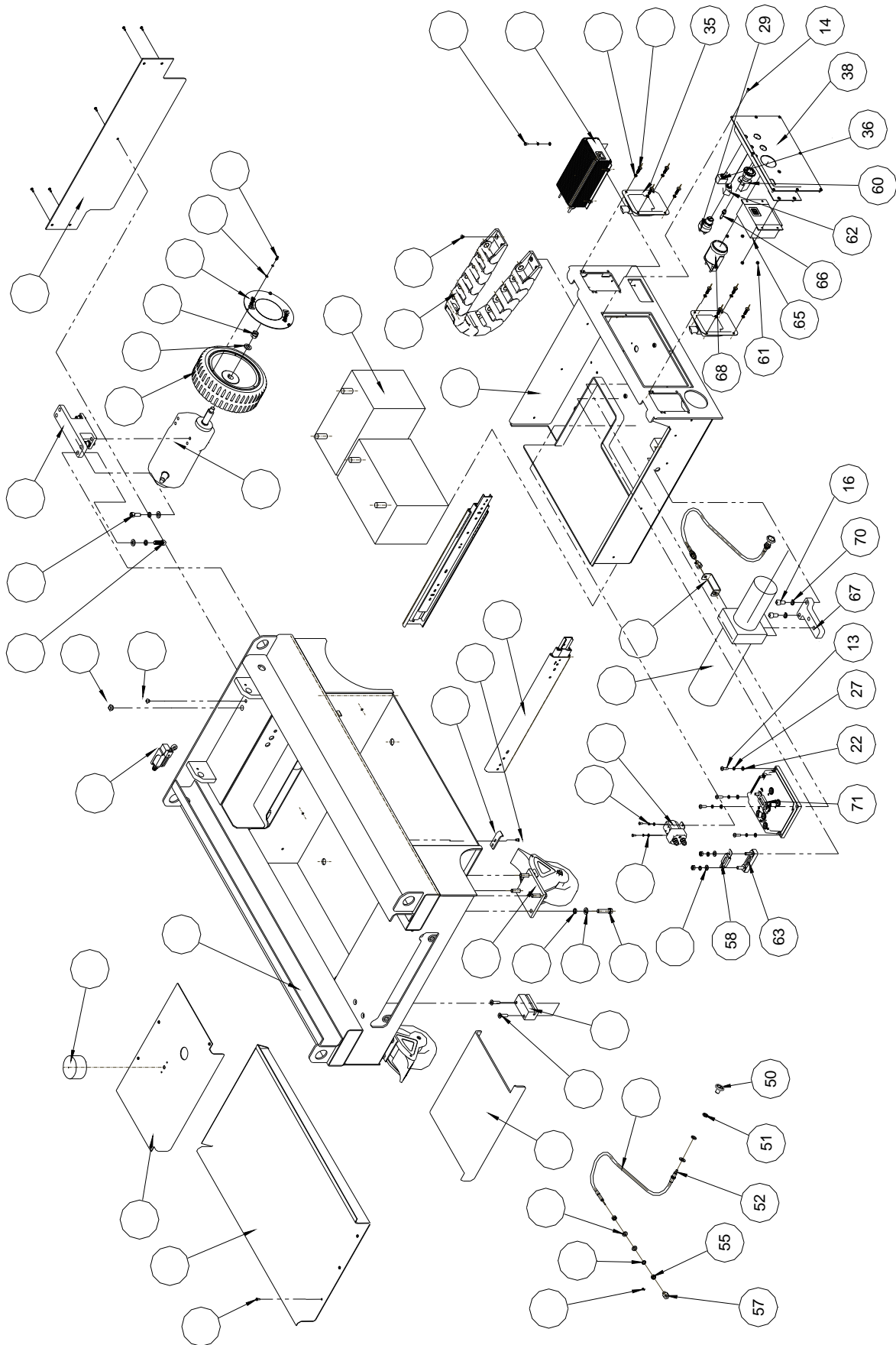
WARNING

THE MANUFACTURER SHALL NOT BE HELD LIABLE IN CASE OF FAULTS OR ACCIDENTS DUE TO NEGLIGENCE, INCAPACITY, INSTALLATION BY UNQUALIFIED TECHNICIANS AND IMPROPER USE OF THE MACHINE

DO NOT OPERATE THIS MACHINE UNTIL YOU READ AND UNDERSTAND ALL THE DANGERS, WARNINGS AND CAUTIONS IN THIS MANUAL



Parts Manual



Parts Manual

NO.	Parts NO.	Description	Qty.	Remark
1	JCPT5007MQ-113002	Plate	2	
2	JCPT5007MQ-113001	Pedal plate	1	
3	JCPT5007MQ-113005	Plate	1	
4	JCPT5007MQ-113003	Cover plate	1	
5	JCPT5007MQ-113004	Cover plate2	1	
6	JCPT5007MQ-113007	Lock	2	
7		Alarm beacon	1	
8	JCPT3707M-00018	Shield sleeve6	1	
9		Shield sleeve12	1	
10	GB/T 818-2000	Screw M4×10	12	
11	GB/T 818-2000	Screw M5×8	4	
12	GB/T 818-2000	Screw M6×20	8	
13	GB/T 818-2000	Screw M6×20-H	1	
14	GB/T 818-2000	Screw M4×10-H	10	
15	GB/T 70.1-2000	Screw M5×8	4	
16	GB/T 70.1-2000	Screw M10×20	2	
17	GB/T 70.1-2000	Screw M4×10	6	
18	GB/T 70.1-2000	Screw M10×30	8	
19	GB/T 819.2-1997	Screw M8×30	4	
20		6" swivel wheel	2	
21	GB/T 97.1-2002	Washer 10	25	
22	GB/T 97.1-2002	Washer 6	9	
23	GB/T 97.1-2002	Washer 4	12	
24	GB/T 97.1-2002	Washer 12	2	
25	GB/T 5782-2000	Bolt M10×45	8	
26	GB/T 93-1987	Washer 10	27	
27		Washer 6	1	
28		Washer 6	8	
29		Key switch	1	
30	7602-20"	Glide track	2	
31	JCPT5007MQ-213100	Chassis	1	
32	JCPT5007MQ-114100	Battery box weld	1	
33	0.8kW	Pump	1	

Parts Manual

NO.	Parts NO.	Description	Qty.	Remark
34	95D	Battery	2	
35	JCPT0630-12012	Lock	2	
36		Up-Down switch	1	
37	QQE240-7CH23-A-MO01-01	Charger	1	
38	JCPT5007MQ-115210	Ground control	1	
39	JCPT5007MQ-114310	Lower wire cover	1	
40	25'Bi=57N.1PZ	Towline	1	
41	JCPT0630-6001	Support seat	1	
42	GB/T 70.3-2000	Screw M6x8	4	
43	JCPT5007MQ-213121	Connect seat	2	
44	HX-SHCS 3/8-24x1	Screw SHCS 3/8-24x1	8	
45	JCPT0807-112006	Outer cover	2	
46	ECC4T2440450LGBL	Driving motor	2	
47	JCPT5007MQ-213310	Wheel	2	
48	AAZ8104	Travel switch	1	
49	GB/T 6182-2000	Nut M12	2	
50	JCPT0630-6100	Handle	1	
51	GB/T 6172.1-2000	Nut M10	1	
52	JCPT5007MQ-114320	Lower wire	1	
53	GB/T 97.1-2002	Washer 8	2	
54	GB/T 93-1987	Washer 8	1	
55	GB/T 6170-2000	Nut M8	2	
56	GB/T 70.1-2000	Screw M3x5	1	
57	JCPT0845-6005	Nut	1	
58	250A	Fuse	1	
59	QCC26C100A/10B 24V	DC contactor	1	
60		Emergency stop Button	1	
61	GB/T 6170-2000	Nut M5	4	
62		Reset switch	1	
63	100A	Fuse seat	1	
64	GB/T 93-1987	Washer 4	3	
65		ECU Module	1	
66	24VDC	Indicator light	1	

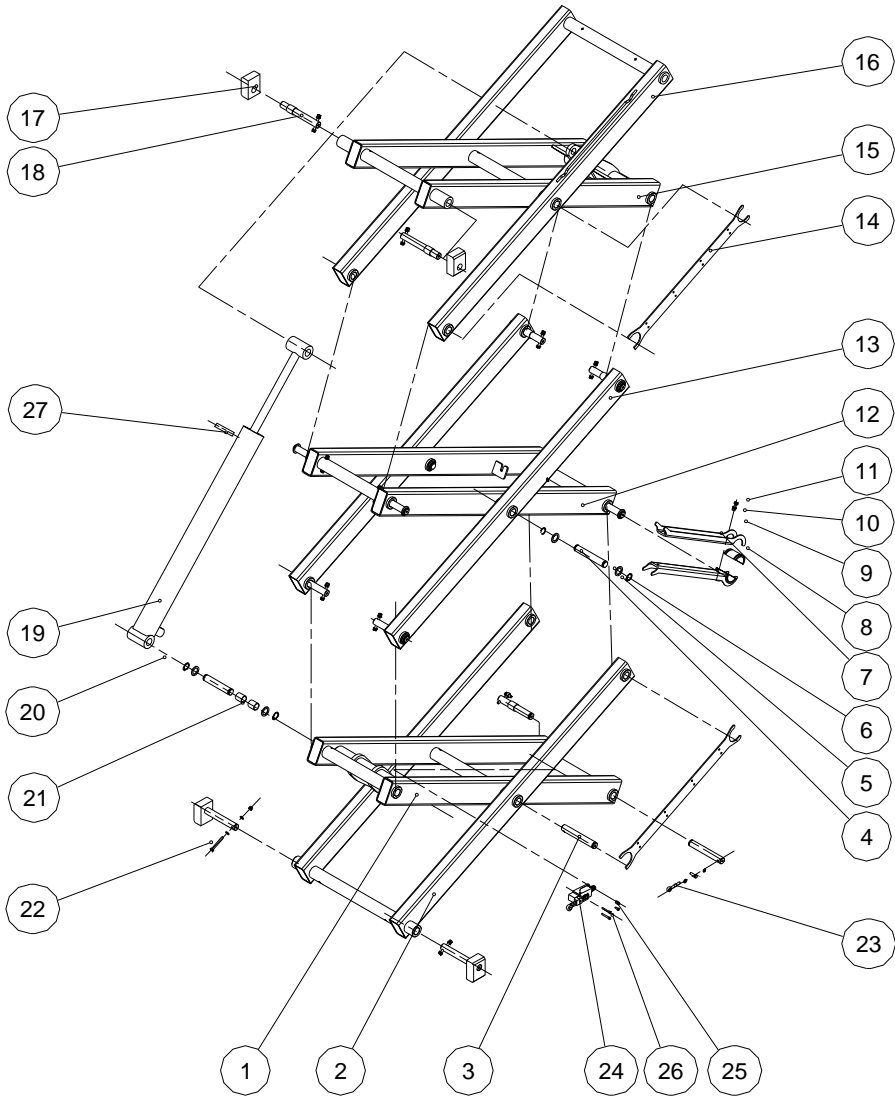
Parts Manual

NO.	Parts NO.	Description	Qty.	Remark
67	JCPT5007MQ-115011	Fix panel	1	
68		Hour meter	1	
69	GB/T 97.1-2002	Washer 8	2	
70	GB/T 93-1987	Washer 10	3	
71	355A	Fuse	1	
72	GB/T 97.1-2002	Washer 4	3	

Parts Manual

Scissors Arms Assembly

JCPT0507DC

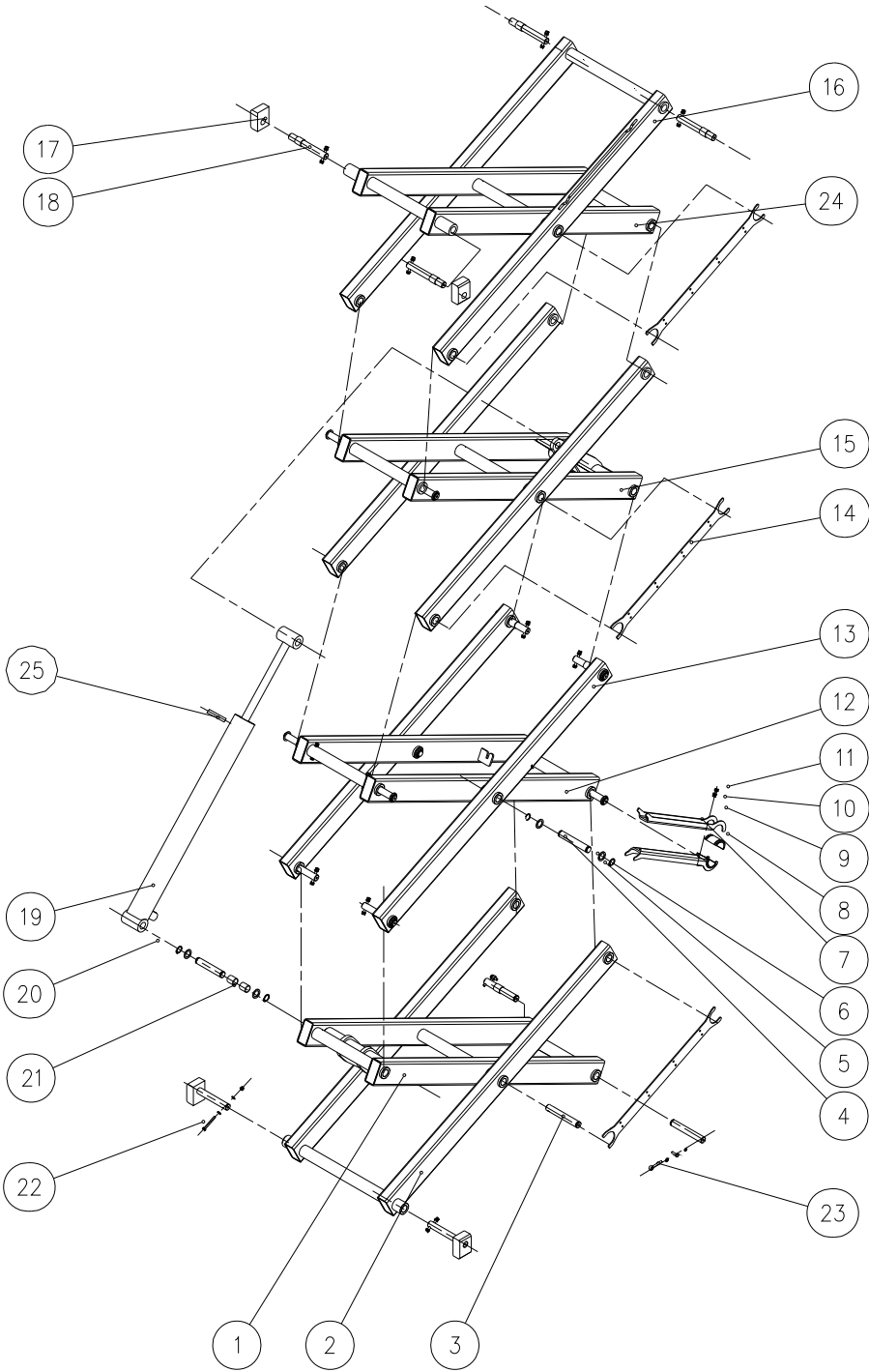


Parts Manual

NO.	Parts NO.	Description	Qty.	Remark
1	JCPT5007MQ-131100	Inner arm11	1	
2	JCPT5007MQ-131200	Out arm 1	1	
3	JCPT5007MQ-131009	Axis	14	
4	JCPT5007MQ-131010	Axis	2	
5		Flange	20	
6	GB894.2-1986	Circle D20	20	
7	JCPT5007MQ-131006	Safety arm	2	
8	JCPT5007MQ-131007	Safety holder	2	
9	GB/T 97.1-2002	Washer 6	40	
10	GB/T 5783-2000	Bolt M6x20	5	
11	GB/T 889.1-2000	Nut M6	20	
12	JCPT5007MQ-131300	Inner arm 2	1	
13	JCPT5007MQ-131400	Out arm 2	1	
14	JCPT5007MQ-131004	Plate	2	
15	JCPT5007MQ-131500	Inner arm 3	1	
16	JCPT5007MQ-131600	Out arm 3	1	
17	JCPT5007MQ-131002	slide block	4	
18	JCPT5007MQ-131001	Axis	6	
19	JCPT5007MQ-153100	Cylinder	1	
20	JCPT5007MQ-131008	Axis	2	
21	25-2023	Bearing	22	
22	GB/T 5782-2000	Bolt M10x90	18	
23	6x65.S	Pin	2	
24	TZ-8108	Travel switch	1	
25	GB/T 70.1-2000	Screw M4x10	2	
26	GB/T 70.1-2000	Screw M4x30	2	
27		Silencer	1	

Parts Manual

JCPT0607DC

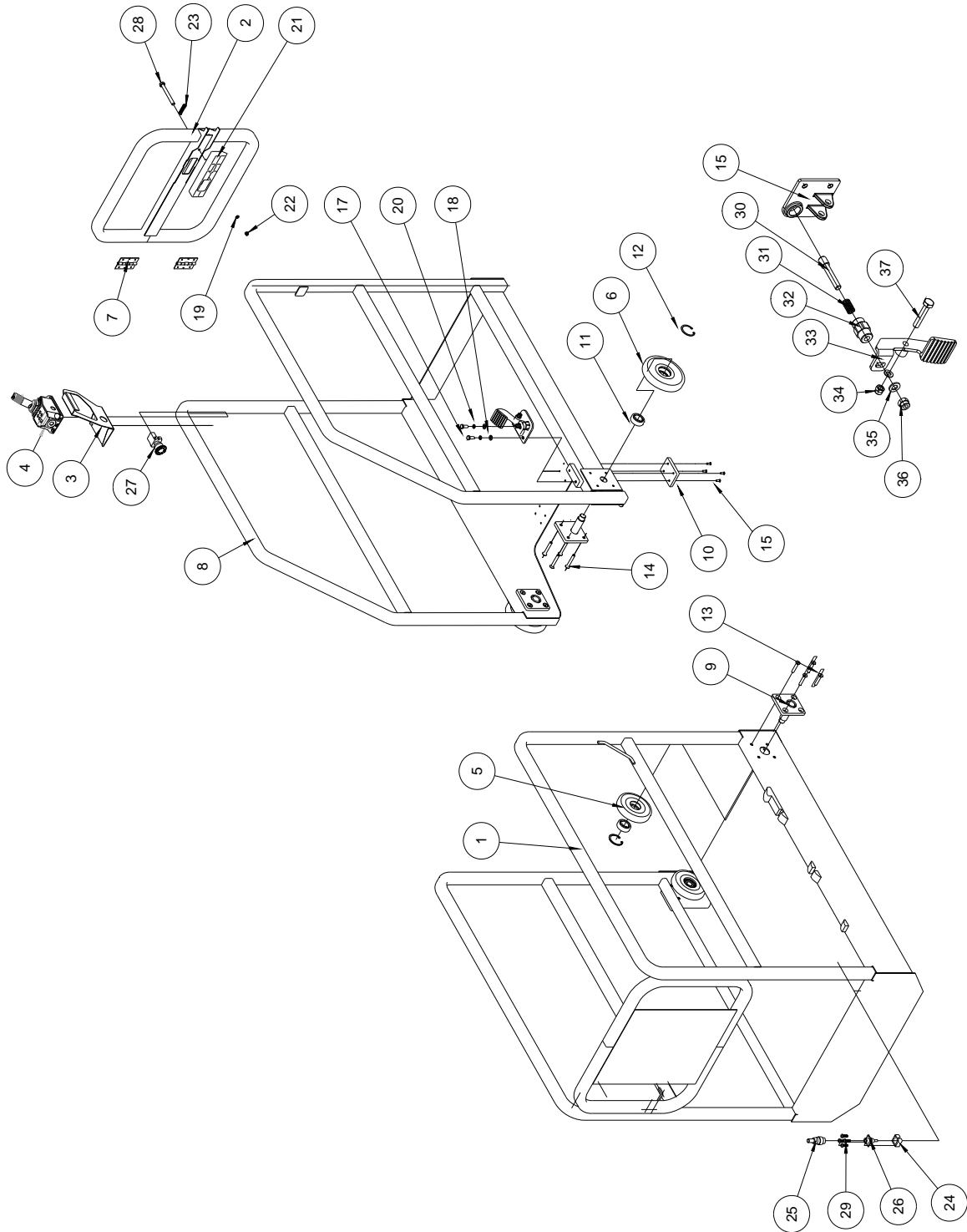


Parts Manual

No.	Parts No.	Description	Qty.	Remark
1	JCPT5007MQ-131100	Inner 1 arm	1	
2	JCPT5007MQ-131200	Outer 1 arm	1	
3	JCPT5007MQ-131009	Axle 1	20	
4	JCPT5007MQ-131010	Axle 2	2	
5	JCPT5007MQ-131012	Bead flange	26	
6	GB894.2-1986	Bead flange D20	26	
7	JCPT5007MQ-131006	Safety arm	2	
8	JCPT5007MQ-131007	Safety Arm Spacer	2	
9	GB/T 97.1-2002	Spacer 6	56	
10	GB/T 5783-2000	Bolt M6×12	4	
11	GB/T 889.1-2000	Nut M6	28	
12	JCPT5007MQ-131300	Inner 2 arm	1	
13	JCPT5007MQ-131400	Outer 2 arm	4	
14	JCPT5007MQ-131004	Wire bridge	3	
15	JCPT5907MQ-131500	Inner 3 arm	1	
16	JCPT5007MQ-131600	Outer 3 arm	1	
17	JCPT5007MQ-131002	Slider	4	
18	JCPT5007M-131001	Axle for slider	6	
19	JCPT5907MQ-531000	Cylinder	1	
20	JCPT5007MQ-131008	Axle for cylinder	2	
21	CSB50-2023-25	Bearing 2025	40	
22	GB/T 5782-2000	Bolt M10×55	26	
23	6x45	Pin	2	
24	JCPT5907MQ-131700	Outer 4 arm	1	

Parts Manual

Platform, All Models



Parts Manual

No.	Parts No.	Description	Qty.	Remark
1	JCPT5007MQ-241100	Fixed deck	1	
2	JCPT5007MQ-241300	Door	1	
3	TYSBZ-001	Hold of console	1	
4		Controller	1	
5	JCPT1212HD-41018	Wheel	2	
6	JCPT1212HD-41017	Wheel 2	2	
7	QB/T3874-1999	Hinge 75	2	
8	JCPT5007M-241200	Extension Deck	1	
9	JCPT1212HD-41030	Wheel installation	4	
10	JCPT0807-41206	Slide	2	
11	GB/T 276-1994	Bearing 6204	4	
12	GB/T 893.1-1986	Circlip 47	4	
13	GB/T 70.3-2000	Screw M8x45	8	
14	GB/T 70.3-2000	Screw M8x55	8	
15	GB/T 819.2-1997	Screw M5x14-H1	8	
16	JCPT0630-41730	Support	1	
17	GB/T 5781-2000	Bolt M8x20	2	
18	GB/T 97.1-2002	Washer 8	3	
19	GB/T 97.1-2002	Washer 6	1	
20	GB/T 93-1987	Washer 8	2	
21	JCPT3707M-43301	Doorknob	1	
22	GB/T 6182-2000	Nut M6	1	
23	JCPT3707M-43302	Spring	1	
24	JCPT1707M-41001	Connect plug seat	1	
25		Connect plug	1	
26		Connect plug	1	
27		Emergency stop button	1	
28	GB/T 5782-2000	Bolt M10x90	1	
29	GB/T 818-2000	Screw M6x20-H	4	
30	JCPT0630-41723	Pin	1	
31	JCPT0630-41721	Spring	1	
32	JCPT0630-41722	Casing	1	
33	JCPT0630-41710	Pedal	1	
34	GB/T 6182-2000	Nut M8	1	
35	GB/T 97.1-2002	Washer 10	1	
36	GB/T 6182-2000	Nut M10	1	
37	GB/T 5781-2000	Bolt M8x50	1	

